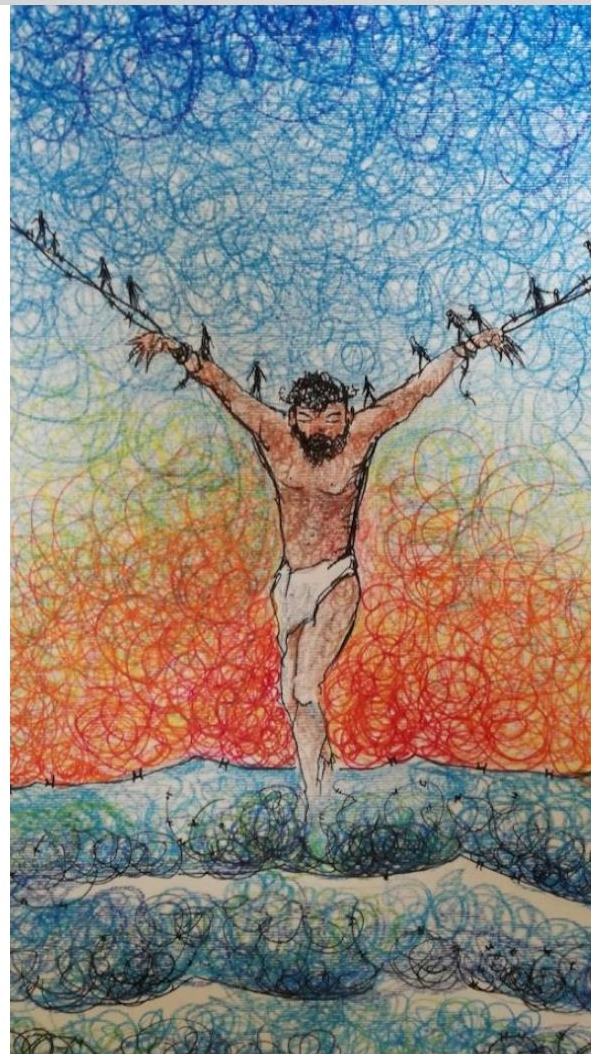




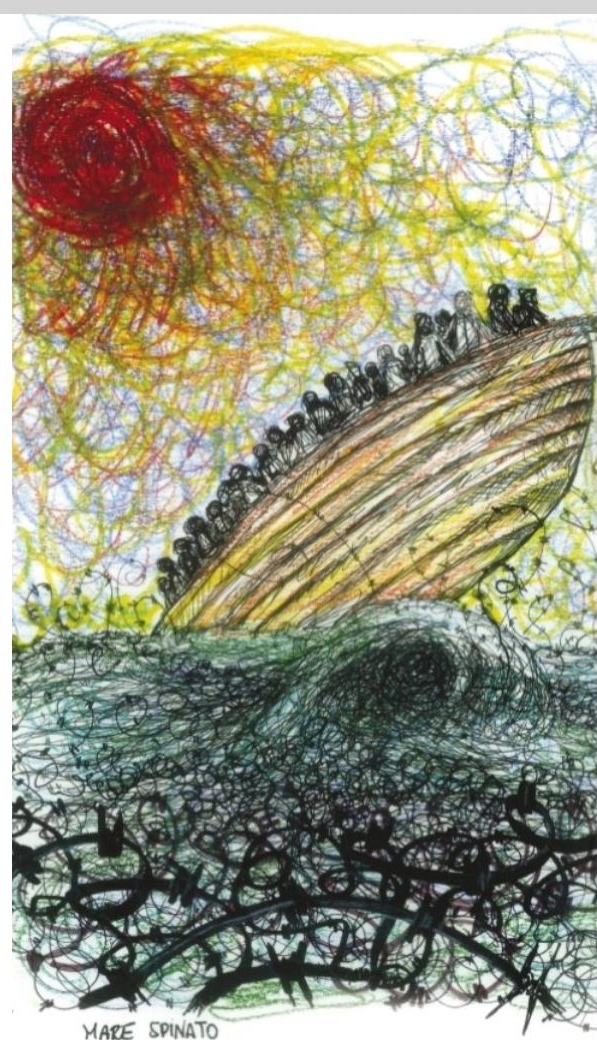
# BUILDING COMMUNITIES OF HOPE

---



# BORDER CROSSING

---



MARE SPINATO



## “PER UNO SCONOSCIUTO GLI SCONOSCIUTI NON PIANGONO”

In questo cimitero hanno trovato sepoltura un numero imprecisato di donne e uomini morti nel tentativo di raggiungere l'Europa attraversando il Mar Mediterraneo, unica via per cercare una possibilità di futuro. La quasi totalità delle tombe non ha un nome e le uniche notizie che è stato possibile recuperare delle storie di queste persone riguardano le circostanze della loro morte o del ritrovamento dei loro corpi.

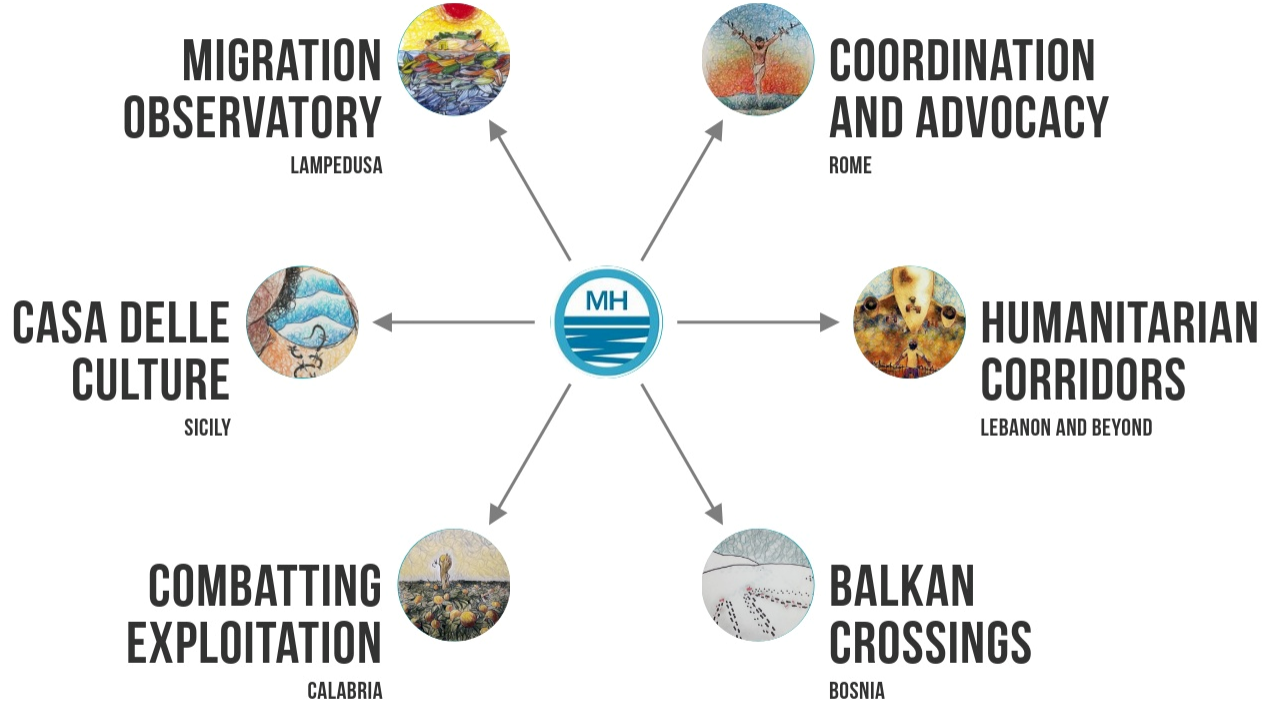
Ma tutti loro hanno vissuto. Hanno gioito e sofferto, hanno sperato e lottato e qualcuno li ha attesi e pianti.

Nella consapevolezza che ogni frammento di storia sia capace di produrre una crepa in quel muro che divide gli uni dagli altri e nella speranza che la memoria di queste vite non vada persa, occorre continuare a raccontare affinché si raggiunga una moltiplicazione delle voci, tale da essere assordante.

*Provare lutto per la morte di chi  
Non abbiamo mai visto -  
Implica una parentela vitale  
Fra l'anima loro - e la nostra -  
Per uno sconosciuto - gli sconosciuti non piangono*

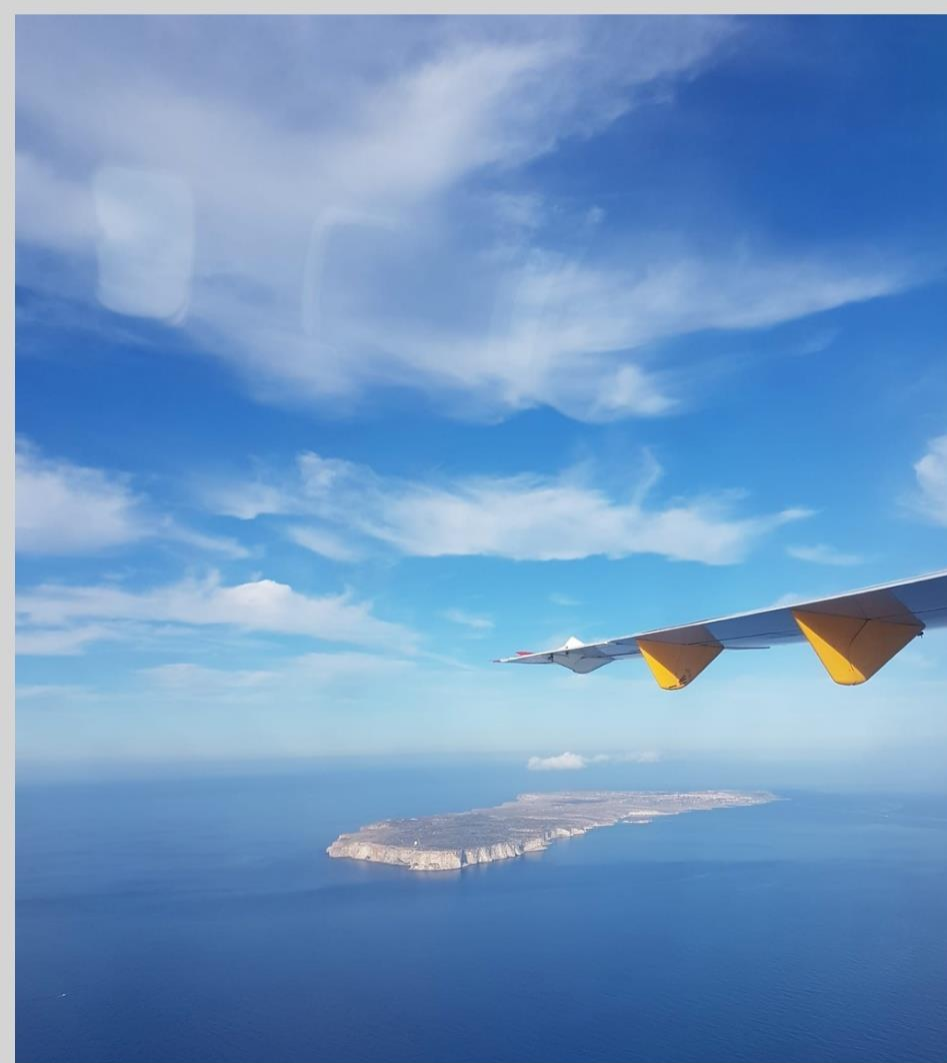
Emily Dickinson

























23 mila monti.

Mora Mori Tiro mes  
Anno 2014 *Pol. F. An*







**“WHAT KIND OF BORDERS DO PEOPLE ON THE MOVE FACE TODAY?,”**

**“HOW ARE BORDERS MANIFEST IN OUR OWN CONTEXTS?,”**

**“CAN WE COME UP WITH A MEANINGFUL DEFINITION OF BORDERS?,”**



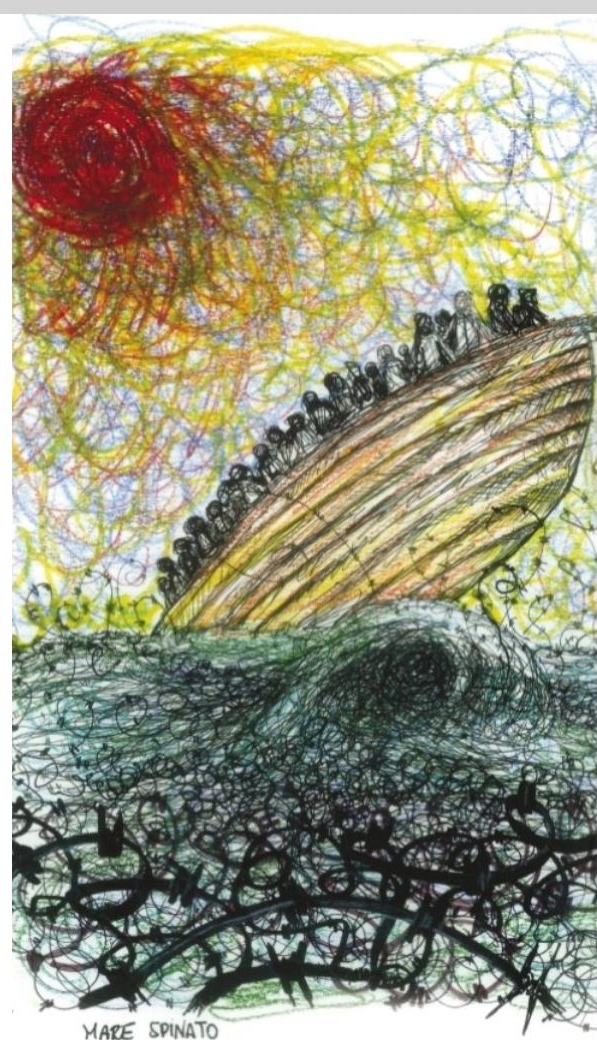


***“ BORDERS ARE NEITHER FIXED NOR IMMOVABLE: NOT JUST WALLS, LINES, OR BARBED WIRE BARRIERS. BORDERS CAN EXTEND THEMSELVES, BE AS BIG AS AN ISLAND, OR AS BIG AS A STRETCH OF SEA. BORDERS MOVE WITH THE PEOPLE ON THE MOVE; THEY ARE CONTINUOUSLY REPRODUCED THROUGHOUT LIFE’S JOURNEY UPON ARRIVAL IN A HOST COUNTRY. DURING THE RECEPTION PROCESS THEY ARE REITERATED BY BUREAUCRACY, DOCUMENTS AND DISCRIMINATION, AND MATERIALIZE IN PRACTICES OF CONTROL AND SURVEILLANCE,,***

MH LAMPEDUSA

# BORDER CROSSING

---



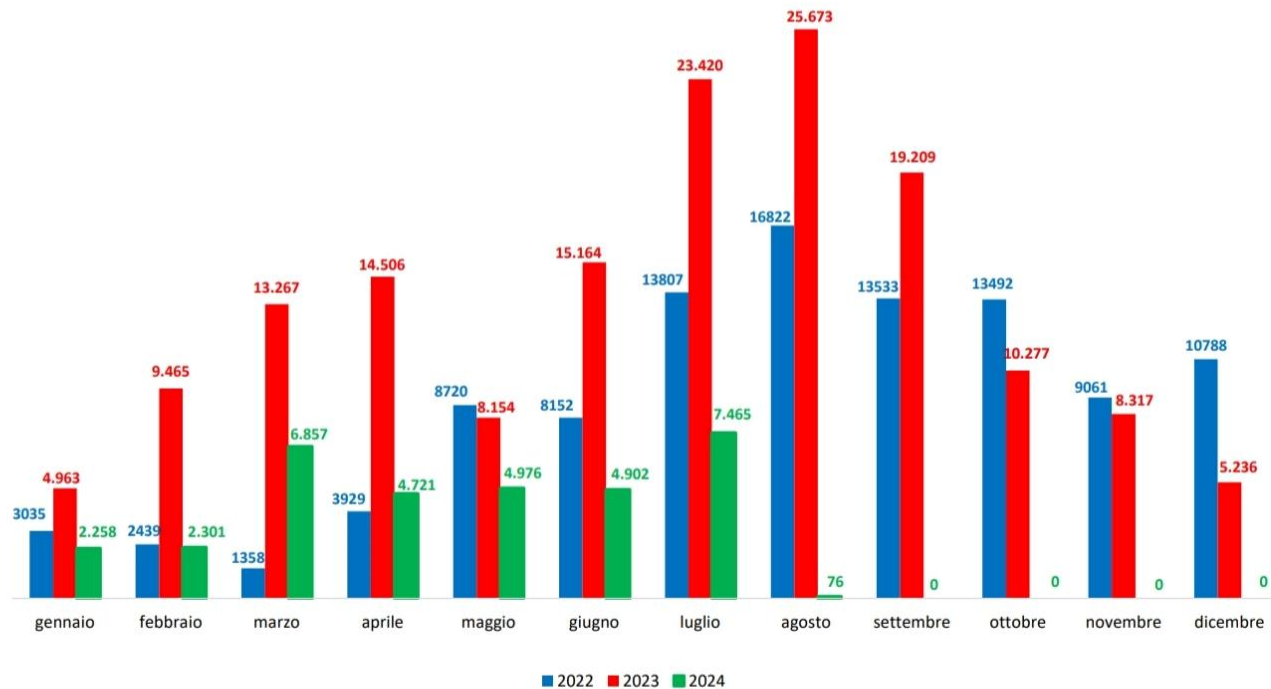
MARE SPINATO

## Comparazione migranti sbarcati negli anni 2022/2023/2024

2022:105.136

2023:157.651

2024:33.556\*



\*I dati si riferiscono agli eventi di sbarco rilevati entro le ore 8:00 del giorno di riferimento.

Fonte: Dipartimento della Pubblica sicurezza. I dati sono suscettibili di successivo consolidamento.



WHO WE ARE

DATA

FAMILIES OF MISSING MIGRANTS

PUBLICATIONS

GOOD PRACTICES



30,002

MISSING MIGRANTS

RECORDED IN MEDITERRANEAN (SINCE 2014)

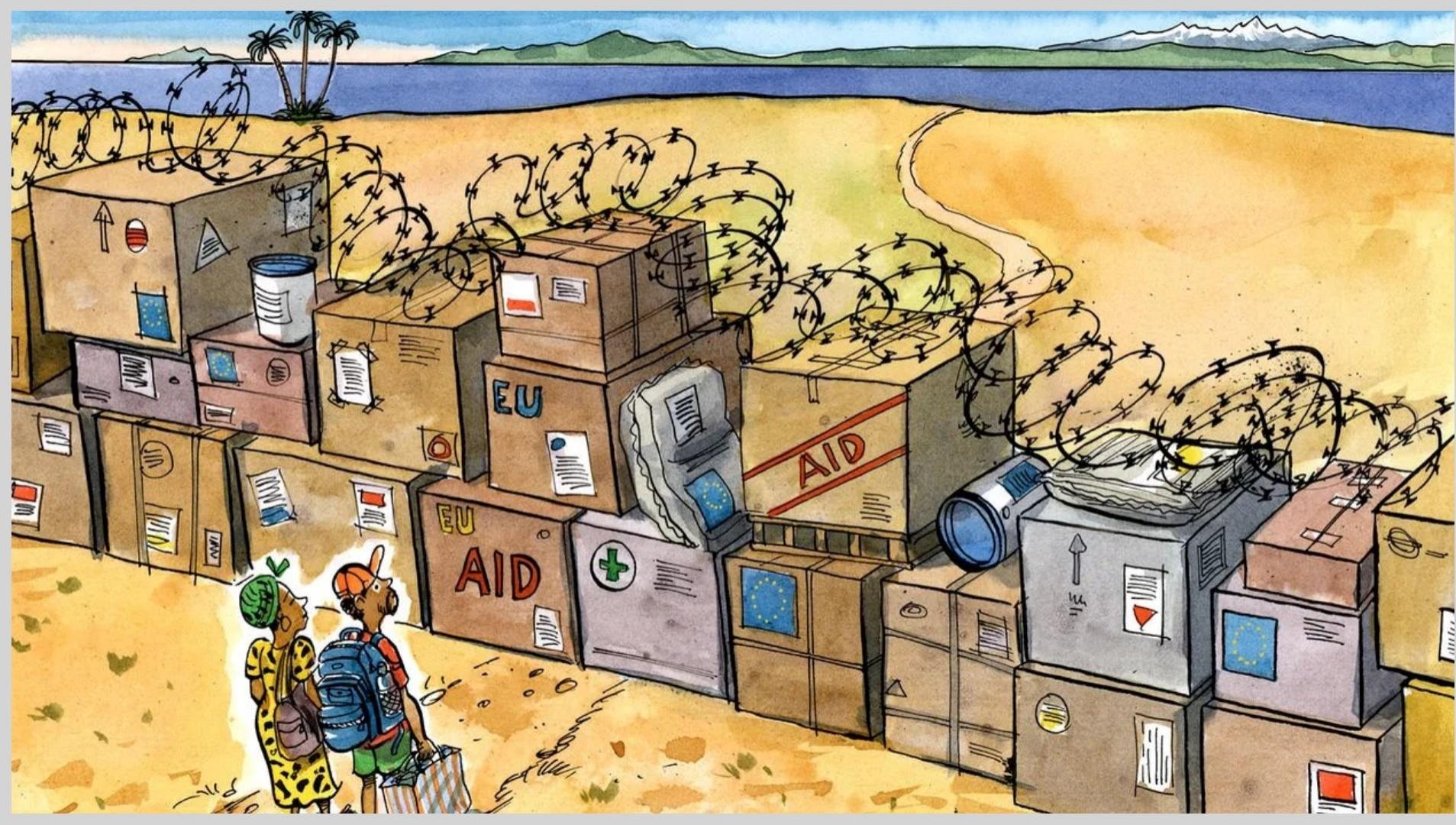


**“ WHICH OF THE "LAWS" DO YOU FIND MOST THOUGHT-PROVOKING? „**

**“ WHAT DO THE "LAWS" TELL US ABOUT THE KIND OF RISKS FACED BY PEOPLE ON THE MOVE? „**

**“ WHAT ARE THE KEY CHARACTERISTICS NEEDED TO ATTEMPT TO CROSS BORDERS? „**









**“ WHICH THEMES EMERGE FROM  
THE REPORTS YOU READ? ”**

**“ ARE THESE FAMILIAR FROM YOUR OWN CONTEXT? ”**

**“ TO WHAT EXTENT DOES THE MEDIA REFLECT  
- OR PROVOKE - WHAT IS DESCRIBED? ”**



# A DI ACCOGLIENZA

Accogliere, dare il benvenuto, sorridere a chi cerca un futuro migliore, o anche solo un futuro.



IL VOCABOLARIO DI MEDITERRANEAN HOPE

Foto: Ron Dauphin



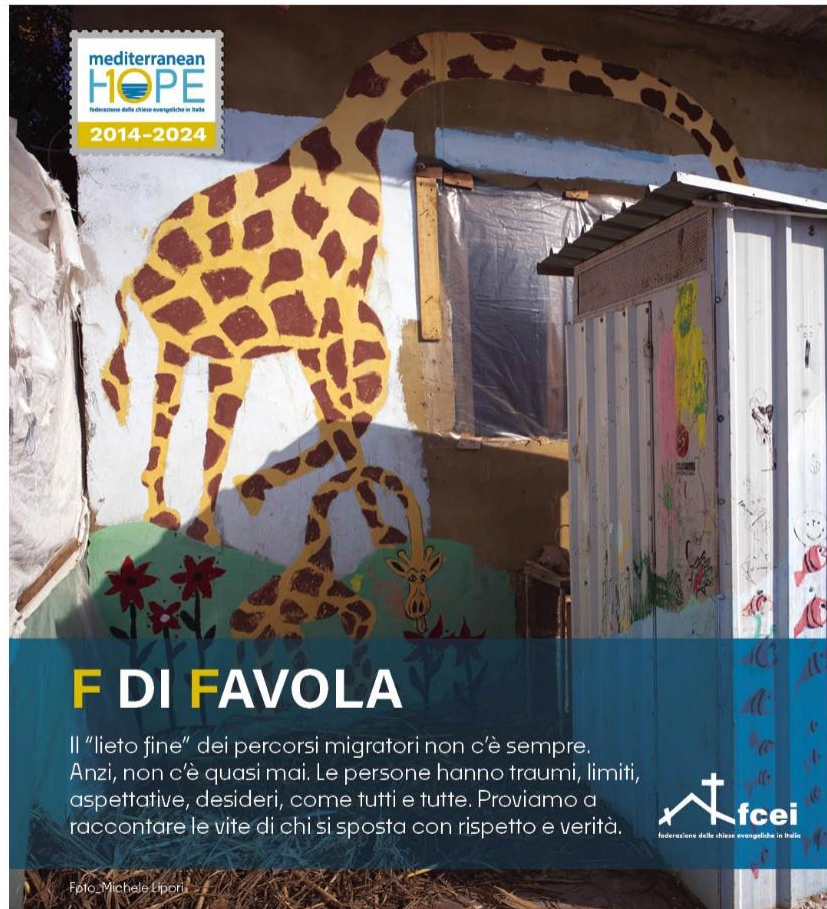


IL VOCABOLARIO DI MEDITERRANEAN HOPE

A  
B  
C  
D  
E  
F  
G  
H  
I  
L  
M  
N  
O  
P  
Q  
R  
S  
T  
U  
V  
Z

## E DI EMERGENZA

L'unica vera emergenza riguarda le persone che continuano a morire in mare, o lungo le altre frontiere. I traumi, le violenze, i soprusi che molti sono costretti a subire. Per noi questo è un problema urgente.



IL VOCABOLARIO DI MEDITERRANEAN HOPE

A  
B  
C  
D  
E  
F  
G  
H  
I  
L  
M  
N  
O  
P  
Q  
R  
S  
T  
U  
V  
Z

## F DI FAVOLA

Il "lieto fine" dei percorsi migratori non c'è sempre. Anzi, non c'è quasi mai. Le persone hanno traumi, limiti, aspettative, desideri, come tutti e tutte. Proviamo a raccontare le vite di chi si sposta con rispetto e verità.



Foto: Michele Ippoliti

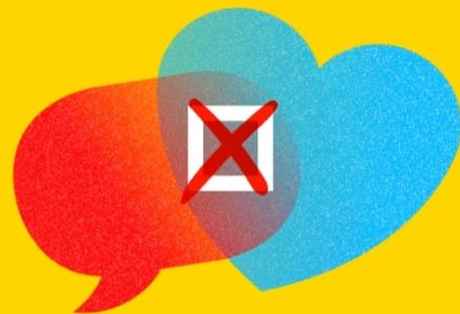




Quaker  
Council for  
European  
Affairs

#choose  
respect 

# TOGETHER WE CAN TACKLE ANTI-MIGRANT HATE SPEECH



## GET THE FACTS ABOUT MIGRANTS AND REFUGEES

Hate begins with fear, and fear is so often built on lack of understanding. Our myth-buster page explores the facts behind the headlines.

## HELP TO CHANGE THE CONVERSATION

If we speak up together, we *can* tackle anti-migrant hate speech! Our tips will help you build a more positive narrative - at home, at work and online.

## REPORT HATE SPEECH

The more people report hate speech when they hear or see it, the more social media platforms and responsible national bodies have to take notice and take action.

# KEEP CALM

This is the most important advice of all. It's easy to dismiss somebody as a racist or type an angry reply to a hateful comment. It might even feel good! But it doesn't do anything to build dialogue, which is vital for building understanding.

Stay positive. Don't counter hate with hate. Show solidarity with migrants and refugees without attacking the instigators of hate speech. Start a conversation – not an argument.

# FLIP THE CONVERSATION

There are so many positive stories about migrants and refugees out there – enough to respond to almost any hateful comment. "Refugees don't contribute?" What about the one who just won the Nobel Peace Prize? Across Europe, migrants and refugees are doing amazing things, and the power of the internet can help you find countless examples. Maybe some of them are just down the street!

One caveat: try not to fall into the trap of defending migrants and refugees in purely economic terms. Sure, migration is good for the economy – but we need to think of them as human beings with rights, not just as workers. If you can, try to respond to economic concerns in human terms.

# GET THE FACTS

Hate is often based on fear of what we don't understand, and there's a lot of confusion out there when it comes to refugees and migrants. Sometimes, pointing somebody in the direction of trustworthy and reliable information can be the first step to changing attitudes.

Why not take a look at our myth-buster page for some help in countering common misconceptions – or send the link to somebody else? It only takes a moment, and could be the first step in a learning process which leads somebody away from hateful narratives.

Alternatively, if you need some more detailed information, there's a wealth of data available from organisations such as the European Union Agency for Asylum and the UNHCR. Critical thinking remains important when interpreting data, which provides only a part of the picture. Migrants and refugees are experts by experience and carry vital insights about the journeys they go through and the systems they navigate.

# APPEAL TO THE HEART

Deep down, even the most hate-filled troll is a human being. And hate is about values as well as facts. With that in mind, there's nothing wrong with appealing to somebody's emotions when responding to hateful comments. It's not cheating to rely on empathy, as well as statistics. "How would you feel if you had to flee a violent conflict and cross the sea in a raft?"

Alternatively, encourage people to think about their core values. "If we had to leave our homes, wouldn't we hope that somebody, somewhere, would be willing to help? Surely our great country is compassionate enough to lend a hand?" Make kindness something to be proud of.

They might not respond there and then, but hopefully they'll think about it later. Who knows the change of heart you may set in motion. Words have an incredible emotional power – use them well!

# KNOW YOUR AUDIENCE

Take a moment to think about what might be motivating somebody's hate in the first place. Even online, a quick look at a social media profile might reveal what its owner cares about. Maybe they're worried about public spending, or have a religiously-inspired concern. Perhaps they're proud of their community and worried about newcomers – or simply afraid of "the other."

Whatever the case, counter-narratives are far more effective when you're on the same page. Address somebody's concerns and they're more likely to hear what you have to say.

# WORK TOGETHER

Hate speech can be upsetting, not to mention overwhelming – but rest assured that you're not alone. Building positive narratives together with like-minded people can be more effective than working alone, and might even boost your morale in the process.

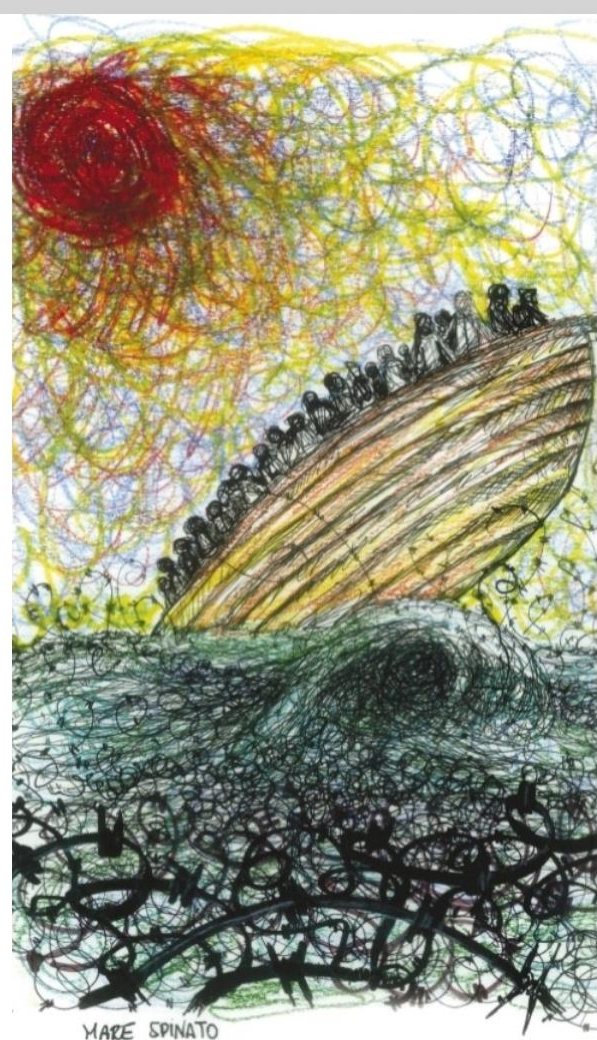
There are plenty of great initiatives out there which connect like-minded people who want to respond to violent and dehumanising speech against migrants and refugees in a more coordinated way.

For some further inspiration, take a look at [examples](#) of initiatives from around Europe, or simply search online for an anti-hate speech campaign in your country or language.



# BORDER CROSSING

---

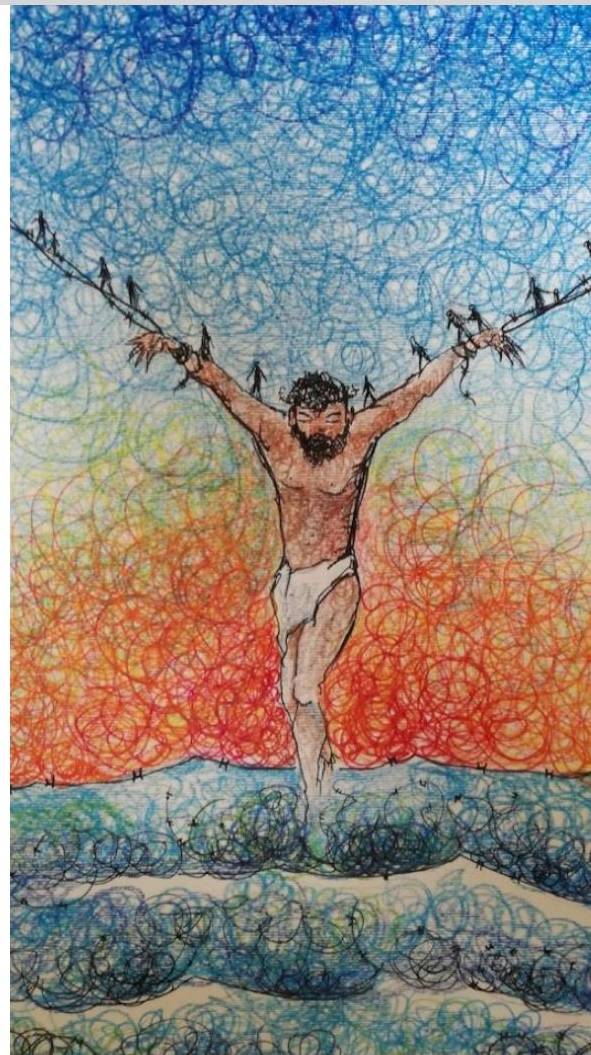


MARE SPINATO



# BUILDING COMMUNITIES OF HOPE

---

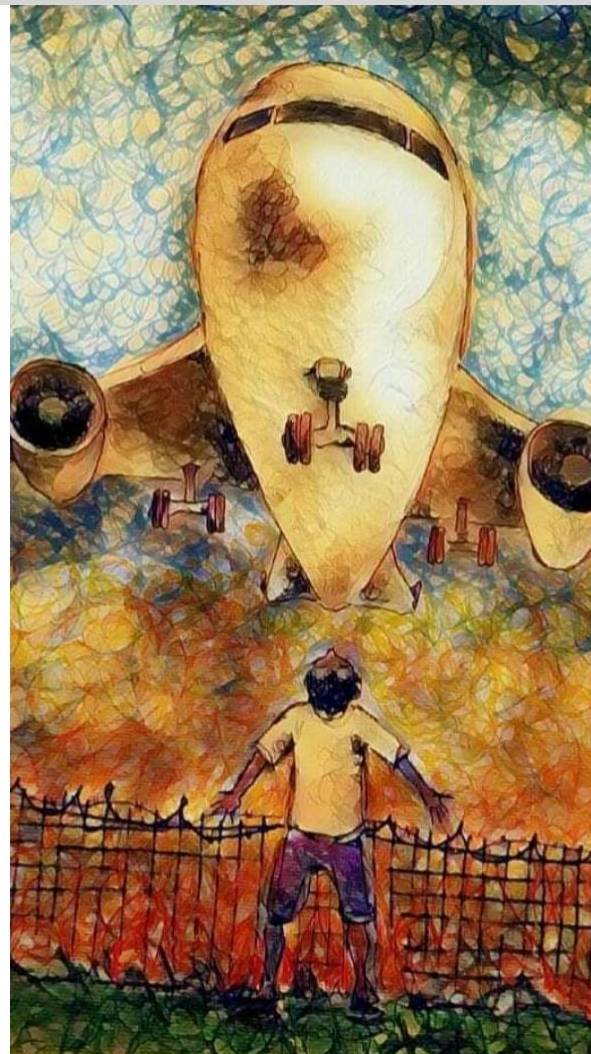






# SAFE PASSAGE

---



LE FRONTIERE UCCIDONO  
L'INDIFFERENZA È COMPLICITÀ

Pain





The Telegraph

“New legal routes for refugees proposed by ministers”



**WE HAVE ENOUGH  
SAFE ROUTES**

Source: 19/4/2023  
**MIGRATION WATCH UK**

The image shows a group of people, including men, women, and children, walking across a wet, muddy beach. They are holding hands and appear to be in a line, possibly waiting for a boat or crossing the water. The background is a bright blue sky with white clouds. The overall scene suggests a humanitarian crisis or a large-scale migration event.





# KEY ELEMENTS

---



**SAFE PASSAGE**



**LEGAL ENTRY**



**PRE AND POST SUPPORT**



**TOWARDS INTEGRATION**

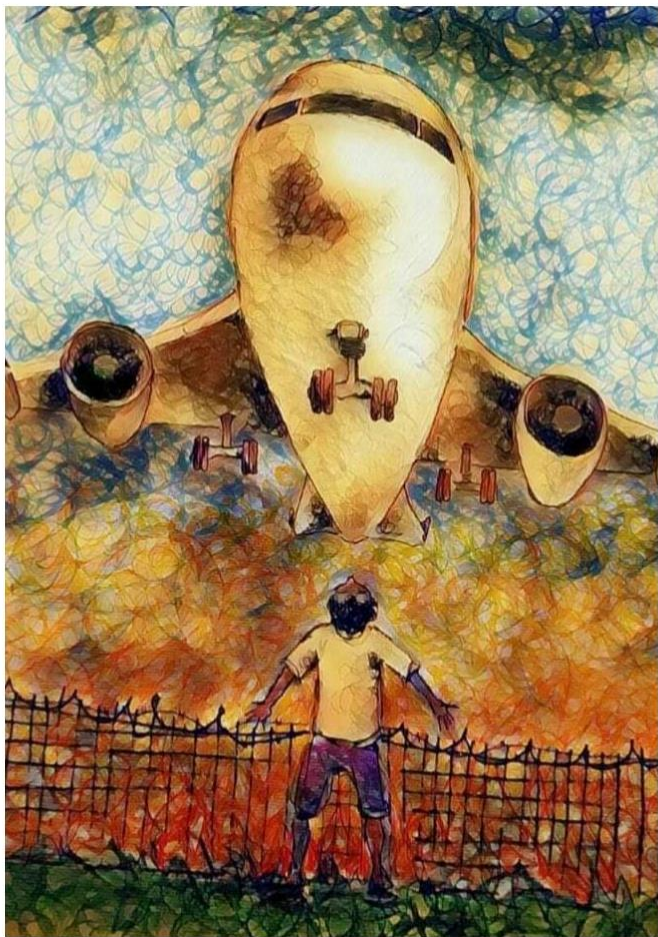




**NANSEN**  
**REFUGEE**  
**AWARD**



**UNHCR**  
The UN Refugee Agency



**“WHAT STRUCK YOU ABOUT THE FILM?”**

**“WHAT DID YOU FIND REASSURING?”**

**“WHAT DID YOU FIND CHALLENGING?”**







## PPI ANALYSIS

# CHALLENGES

---



### STRUCTURAL

- Level of welfare support
- Outside reception system



### OPERATIONAL

- Overall cost
- Imbalance of responsibility
- Discretionary arrangements



### ASPIRATIONAL

- Mismatched expectations
- Lack of work
- Delayed autonomy





## PPI ANALYSIS

# POSTIVE IMPACTS

---



### ...ON PARTICIPANTS

- Enhanced integration
- Retention of own culture in multi-cultural context
- Confidence in future



### ...ON SOCIETY

- Shifting perspectives
- Increased diversity
- Increased social cohesion



### ...ON POLICY

- Contextual adaptability
- Inclusive eligibility criteria
- Cross-cutting political support

# ECOSYSTEM OF SAFE AND LEGAL PATHWAYS

---



**RESETTLEMENT**



**HUMANITARIAN ADMISSIONS**



**EDUCATIONAL PATHWAYS**



**LABOUR PATHWAYS**





**UNHCR**  
The UN Refugee Agency





Global Refugee  
Sponsorship Initiative

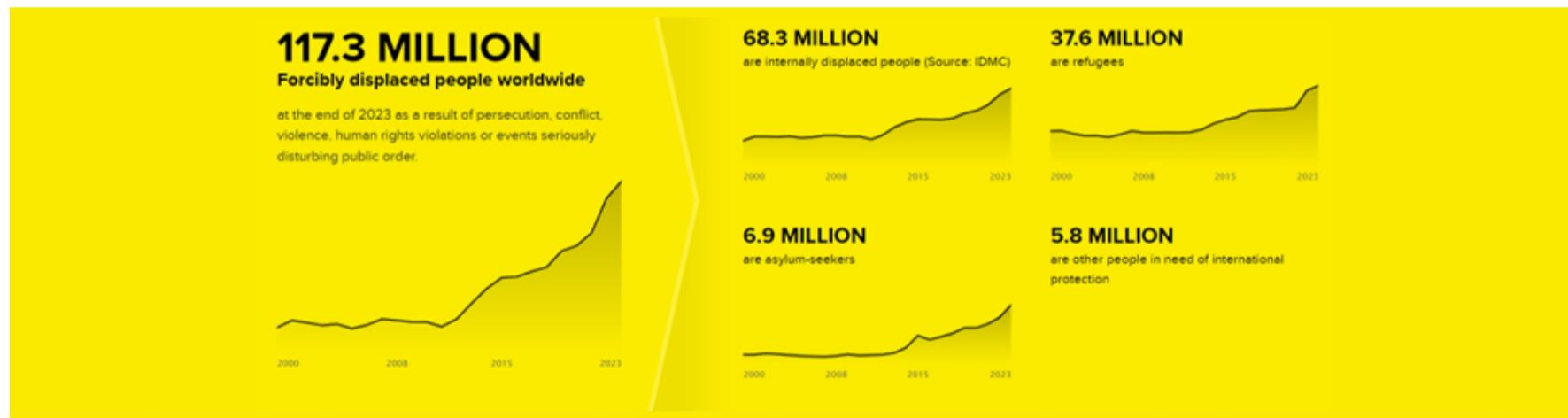




## IN NUMBERS

# UNHCR'S DATA FINDER TELLS US...

[unhcr.org/refugee-statistics/](https://unhcr.org/refugee-statistics/)



UNHCR anticipates a significant rise in global **refugee resettlement needs** for next year. According to [the Projected Global Resettlement Needs Assessment for 2024](#) released in June, over **2.4 million** refugees will be in need of resettlement, marking a **20% increase** compared to 2023.

# 69%

## hosted in neighbouring countries

---

69 per cent of refugees and other people in need of international protection lived in countries neighbouring their countries of origin.



# 75%

## hosted in low- and middle-income countries

---

Low- and middle-income countries host three-quarters of the world's refugees and other people in need of international protection. The Least Developed Countries provided asylum to 21 per cent of the total.

# 39%

## hosted in five countries

---

Colombia, Germany, the Islamic Republic of Iran, Pakistan, and Türkiye hosted nearly 2 in 5 of the world's refugees and other people in need of international protection.

Islamic Republic of Iran	3.8 million
Türkiye	3.3 million
Colombia	2.9 million
Germany	2.6 million
Pakistan	2.0 million

# 73%

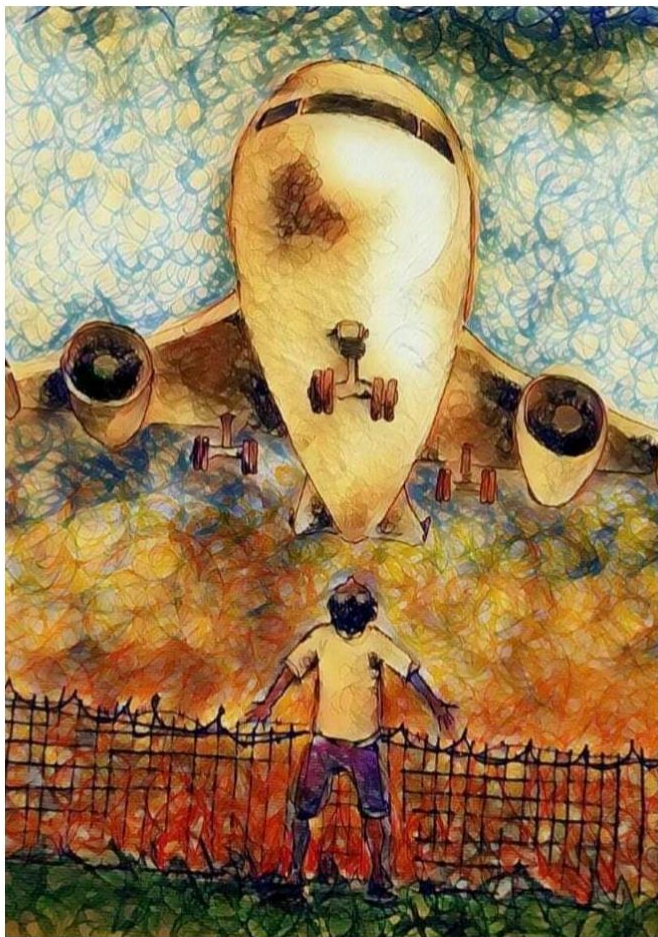
## originate from just five countries

---

Nearly three-quarters of all refugees under UNHCR's mandate and other people in need of international protection come from just five countries.

Afghanistan	6.4 million
Syrian Arab Republic	6.4 million
Venezuela	6.1 million
Ukraine	6.0 million
South Sudan	2.3 million





**“ WHICH LEGAL PATHWAYS  
EXIST IN YOUR CONTEXT? „**

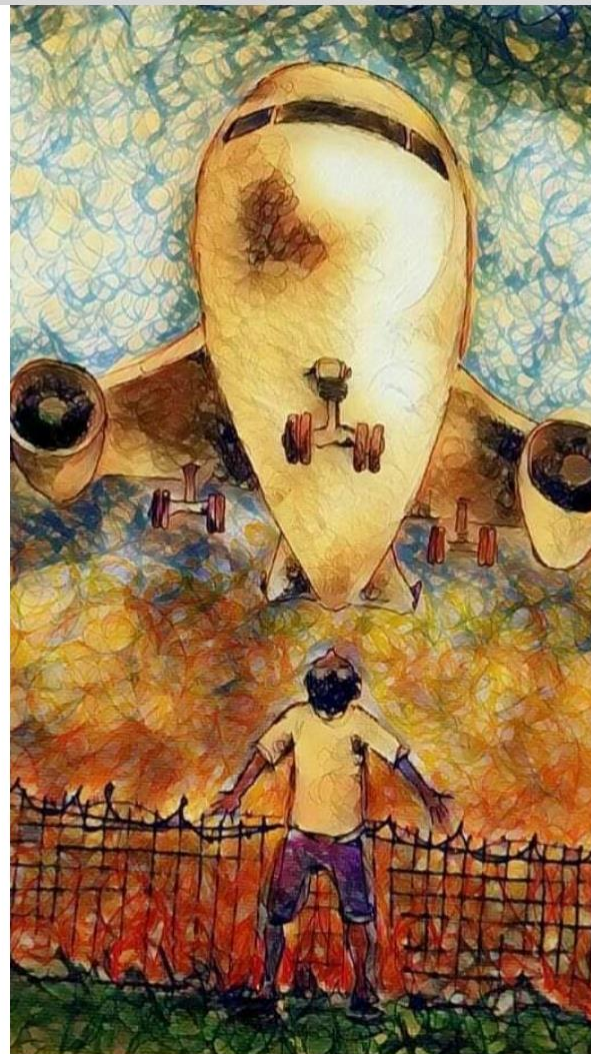
**“ WHAT - AND WHO - IS NEEDED TO GET  
A LEGAL PATHWAY OFF THE GROUND? „**

**“ WHAT STEPS CAN WE TAKE TO GENERATE MORE? „**



# SAFE PASSAGE

---









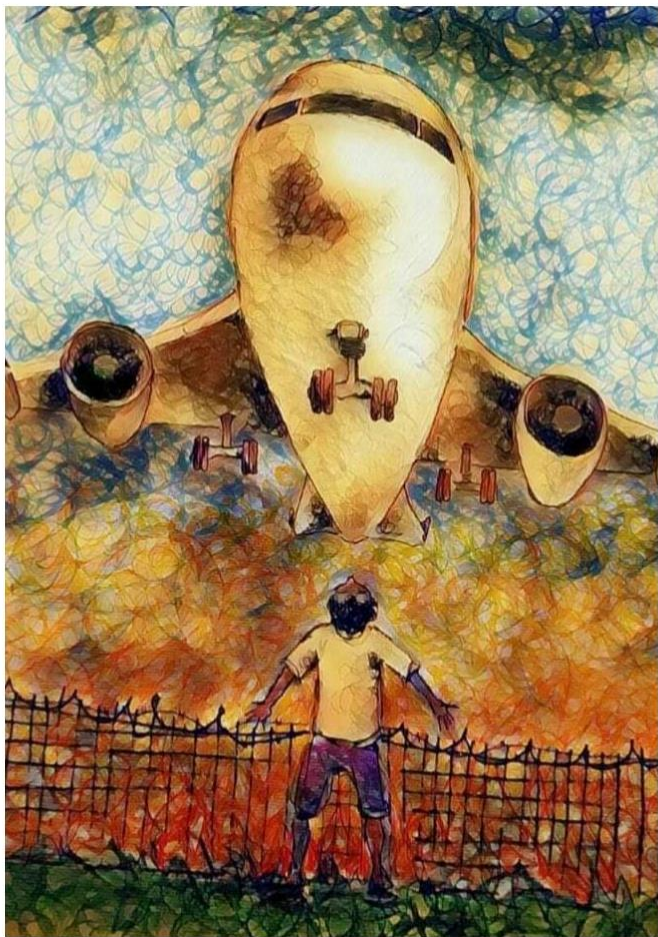


Laboratorio artistico e terapeutico  
"Hear my voice"  
realizzato da Karen e Bill Crooks  
volontari della Chiesa Anglicana

Gennaio 2022







**“WHAT HELPS US TO FEEL  
WELCOME/UNWELCOME?”**

I feel welcome when....  
I feel unwelcome when...

**“TO WHICH COMMUNITIES DO WE BELONG  
AND WHERE DO WE HAVE IMPACT?”**

**“HOW CAN/DOES YOUR COMMUNITY  
WELCOME NEWCOMERS?”**



# Community Sponsorship



Federazione delle chiese evangeliche in Italia



federazione delle chiese evangeliche in Italia

2014-2024

# Manifesto per l'accoglienza

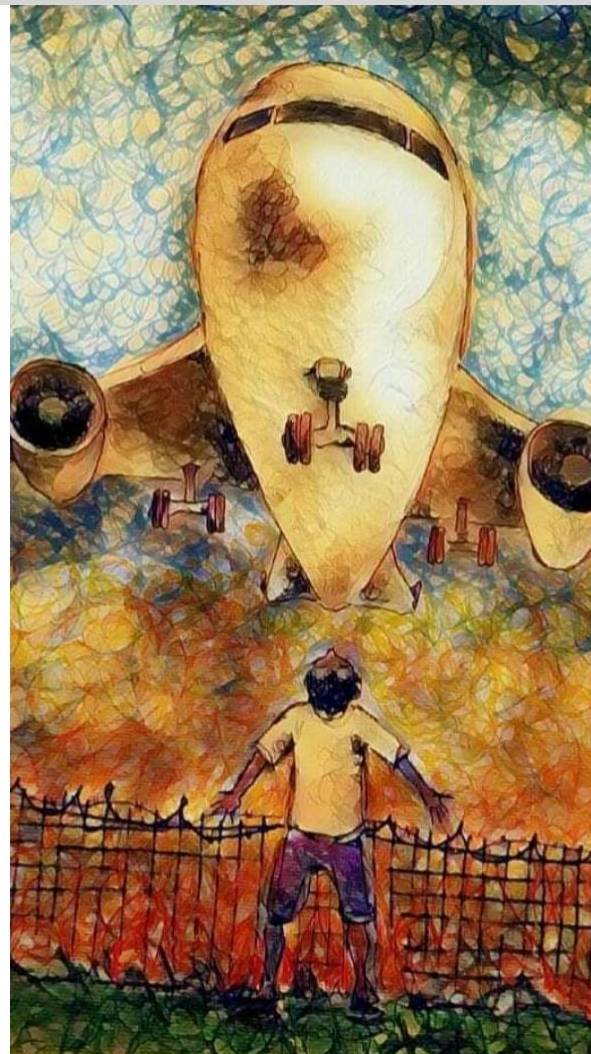
Questa è una chiesa che accoglie





# SAFE PASSAGE

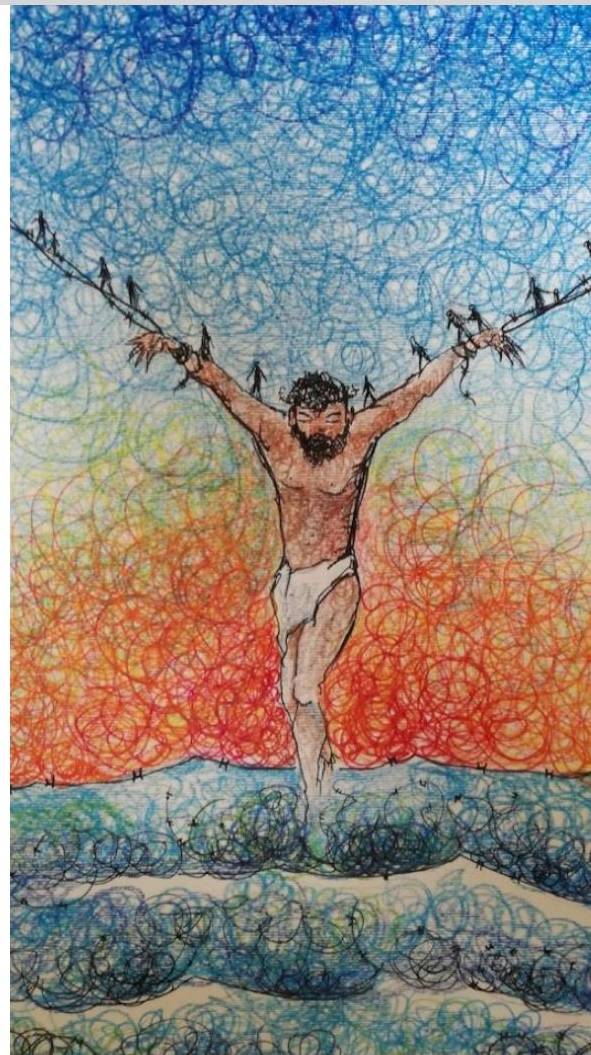
---





# BUILDING COMMUNITIES OF HOPE

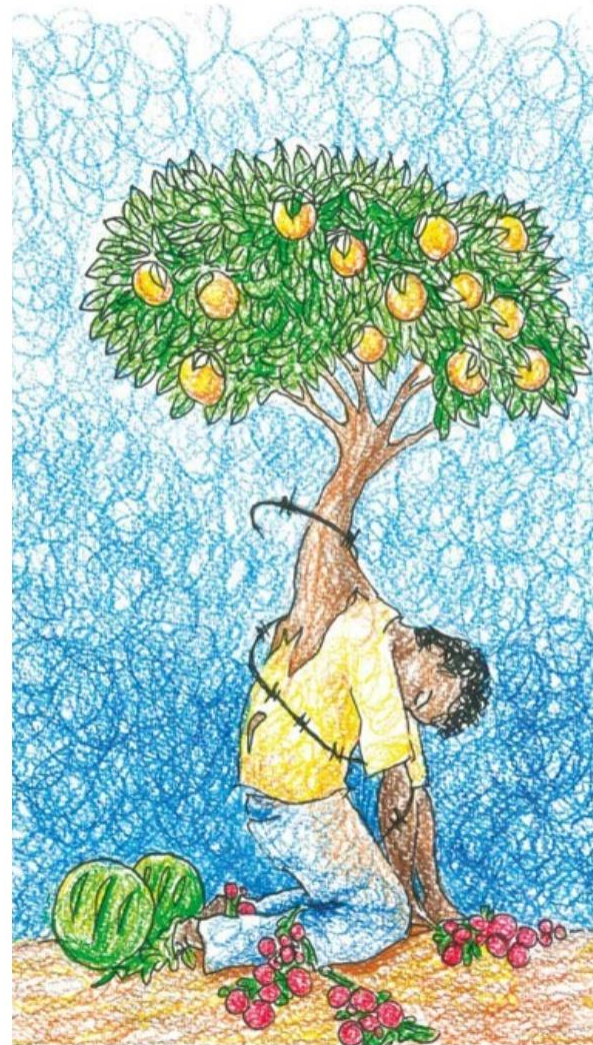
---





# EXPLOITATION

---

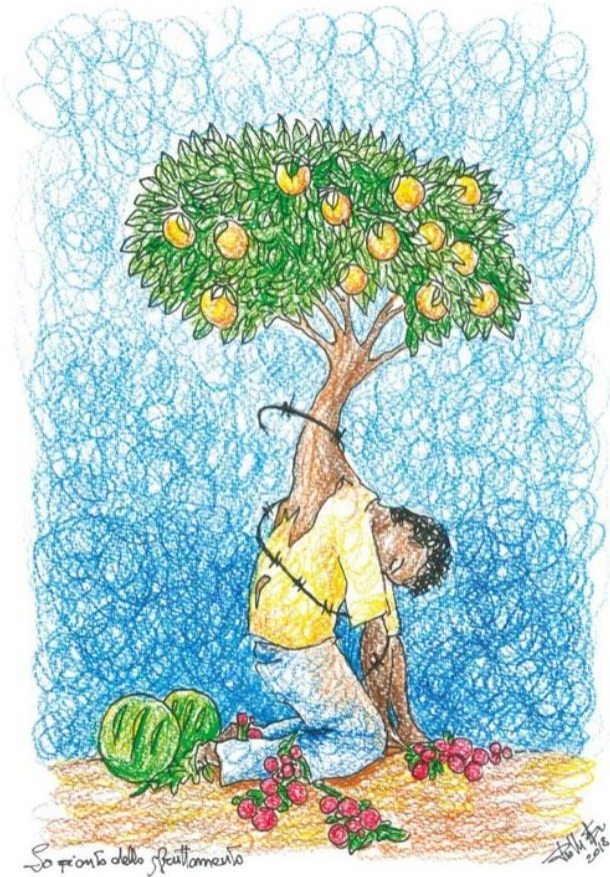








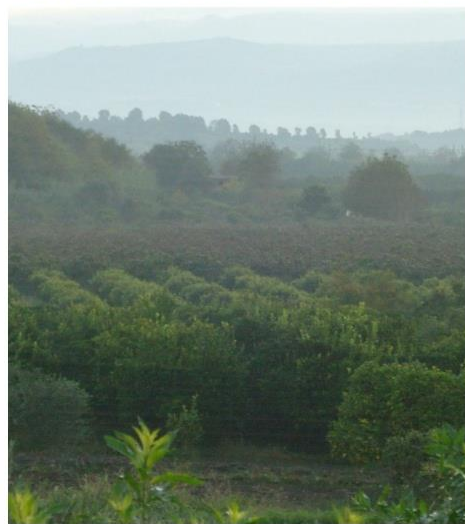
[HTTPS://THEPICKERS.DE](https://thepickers.de)



**“WHAT STRUCK YOU ABOUT THE FILM?”**

**“WHAT DID YOU FIND MOST CHALLENGING?”**











# LABOUR EXPLOITATION

## AGRICULTURE



25% ITALIAN ECONOMY



NO DOCUMENTS OR CONTRACTS



10% ORGANISED CRIME EARNINGS



48% UNDECLARED WORKERS



NO HOUSE



€ 15-25 FOR 8-15 HOURS PER DAY



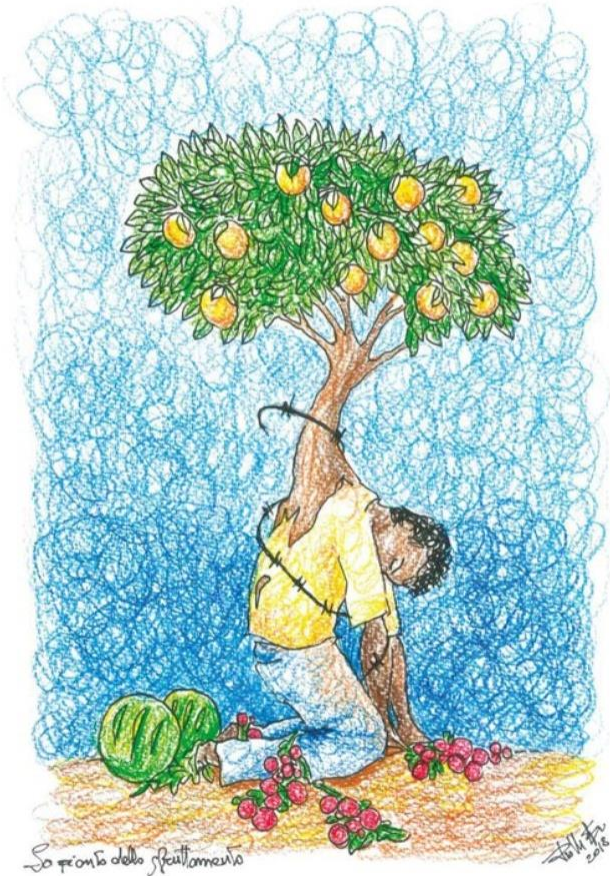
450,000 EXPLOITED WORKERS



NO TRANSPORT



20% - 30% LESS PAY FOR WOMEN



**“ IS THIS KIND OF EXPLOITATION HAPPENING  
IN - OR SUPPORTED BY - YOUR CONTEXT? ”**

**“ WHAT ARE PEOPLE DOING TO TACKLE IT? ”**

**“ WHAT GETS IN THE WAY OF THAT? ”**







Evangelische Kirche  
von Westfalen



INFORMATION (IN GERMAN) [WWW.EINE-WELT-GRUPPEN.DE/ORANGEN-AKTION/](http://WWW.EINE-WELT-GRUPPEN.DE/ORANGEN-AKTION/)











**CENA  
AFRO  
CALABRESE**

**A SOSTEGNO DELLA CASA  
DEL POPOLO VALARIOTI**

PRESSO OSTELLO SOCIALE DAMBE SO,  
VIA PITAGORA 1, SAN FERDINANDO (RC)

È NECESSARIO PRENOTARE, TEL. 392 324 8841

**25 NOVEMBRE ORE 20:30**

QUOTA MINIMA DI PARTECIPAZIONE:  
10 EURO



CON IL SOSTEGNO DI

**LABORATORIO DI COMUNICAZIONE  
diventa reporter di comunità**

**VENERDÌ 6 OTTOBRE**  
presentazione del progetto  
e primo incontro conoscitivo

**ore 17**  
**Casa della Dignità - DAMBE SO**  
**San Ferdinando (RC)**

per info:  
campagneaperte@gmail.com  
351 2900143 (Francesco)  
347 0144998 (Dario)

**in collaborazione con RADIO CIROMA**

Iniziativa realizzata nell'ambito del progetto Campagne aperte:  
laboratorio di pratiche territoriali per promuovere dignità di vita e  
di lavoro - 2021-IMM-00541





# FUORI DAL GHETTO

14-15-16  
OTTOBRE

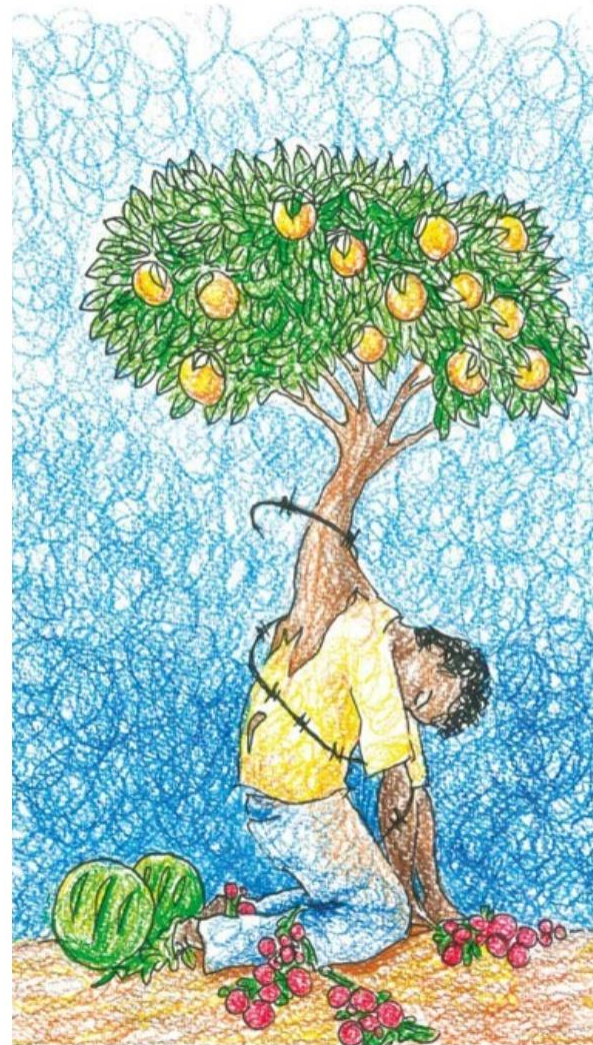
## ROSARNO FILM FESTIVAL





# EXPLOITATION

---





[Modern Slavery](#)

[Who we are](#)

[What we do](#)

[Resources](#)

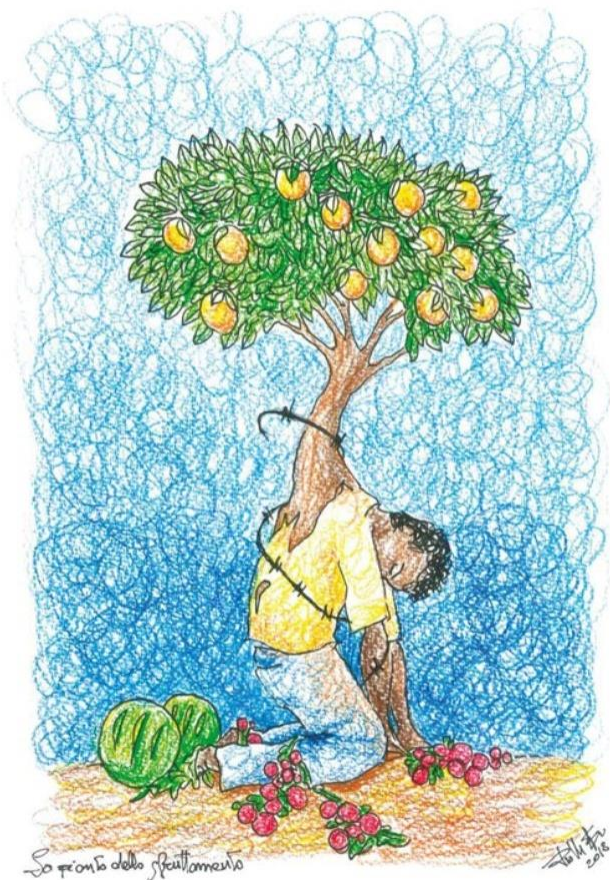
# THE CLEWER INITIATIVE

We believe that the tools to end modern slavery already exist within the local community and that the Church, which is present in all communities and at the heart of many, has a primary responsibility in leading these efforts.



A woman with long dark hair, wearing a dark olive-green sweater and dark pants, is sitting on a simple wooden chair in the center of a large, empty room. The room has a high ceiling and a large, multi-paned window at the top. The walls are made of exposed brick, and the floor is a light-colored, polished concrete. The lighting is soft and even, highlighting the woman and the texture of the brick walls.

**THIS IS THE TRUE STORY OF HANA**  
**DETAILS HAVE BEEN CHANGED TO PROTECT HER IDENTITY**



“ HOW DID HANA'S  
STORY MAKE  
YOU FEEL? ”

“ WHAT INSPIRED  
YOU AND WHAT  
QUESTIONS DOES IT  
LEAVE YOU WITH? ”

“ ARE THERE PLACES IN  
YOUR COMMUNITY  
WHERE EXPLOITED  
EMPLOYEES MAY BE  
WORKING? ”

“ HOW SHOULD/DO/CAN  
WE RESPOND? ”



**And so we move on**



▶ 0:02 / 5:43





**“WHAT THEMES HAVE TOUCHED YOU MOST THIS WEEK?,,**

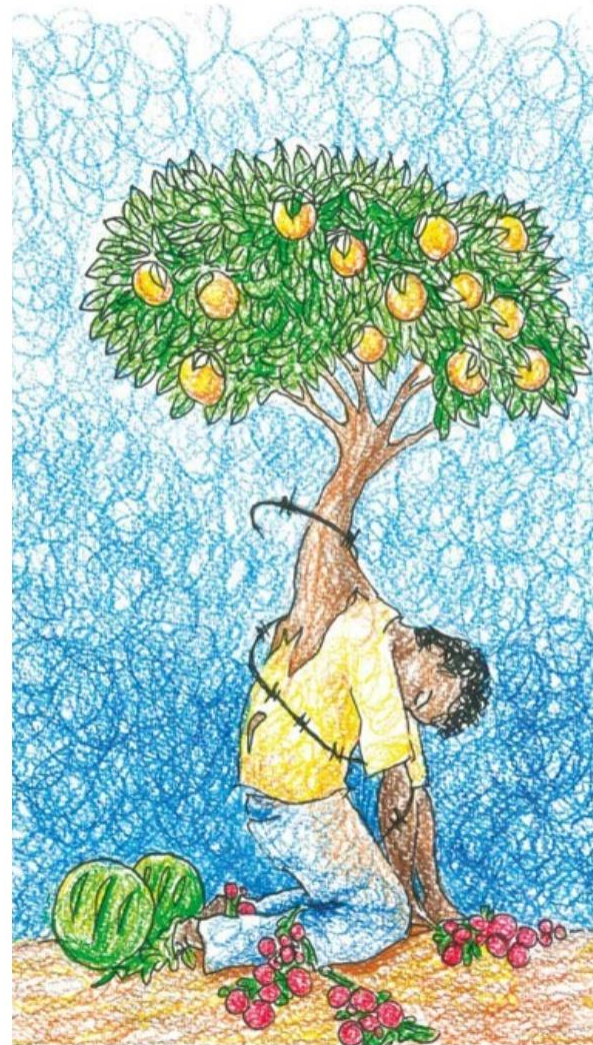
**“HOW HAS YOUR RESPONSE TO THE THEME BEEN AFFECTED BY WHAT YOU HAVE ENCOUNTERED?,,**

**“WHAT ONE THING WILL YOU DO BY WAY OF FOLLOW-UP?,,**



# EXPLOITATION

---





# BUILDING COMMUNITIES OF HOPE

---

fiona.kendall@fcei.it

